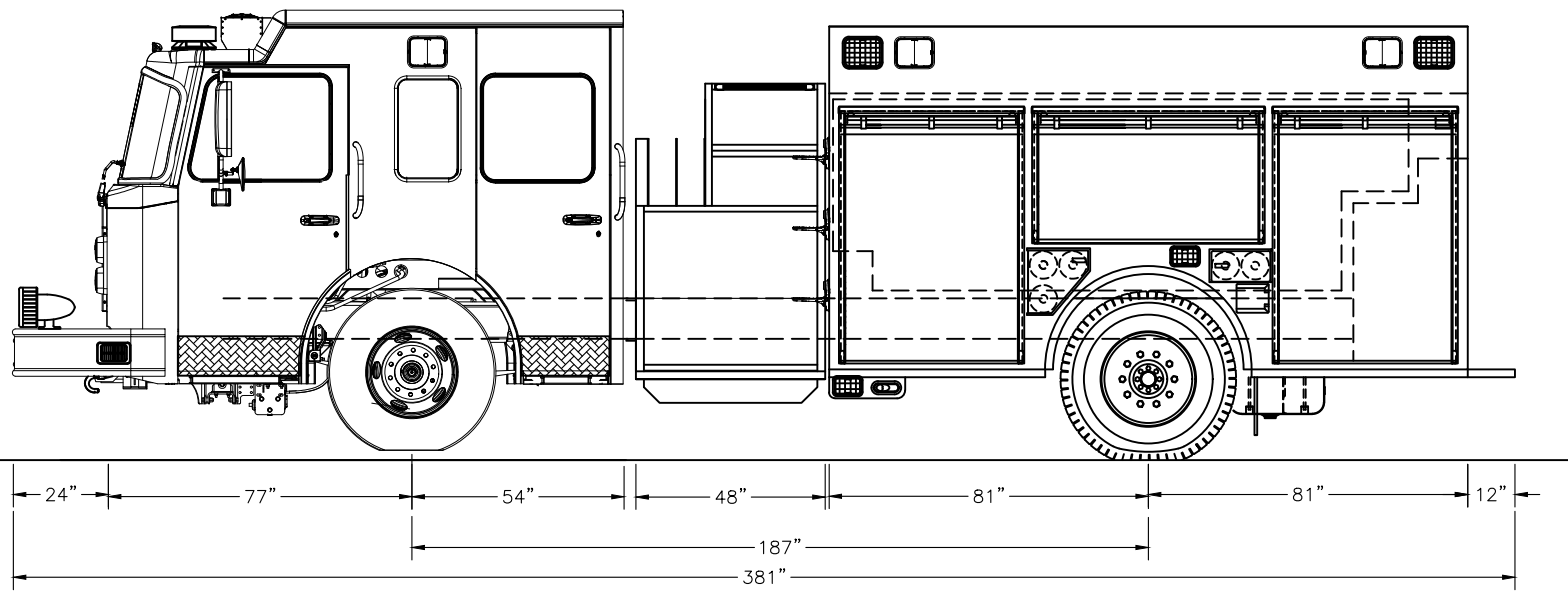
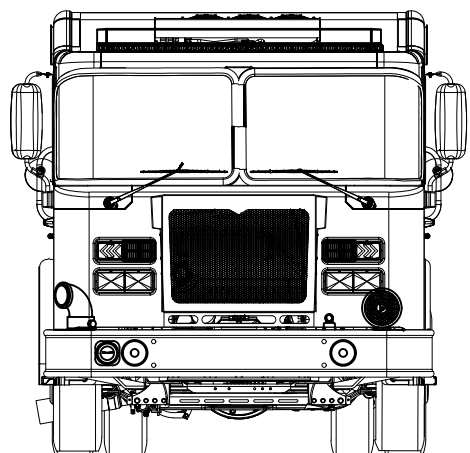
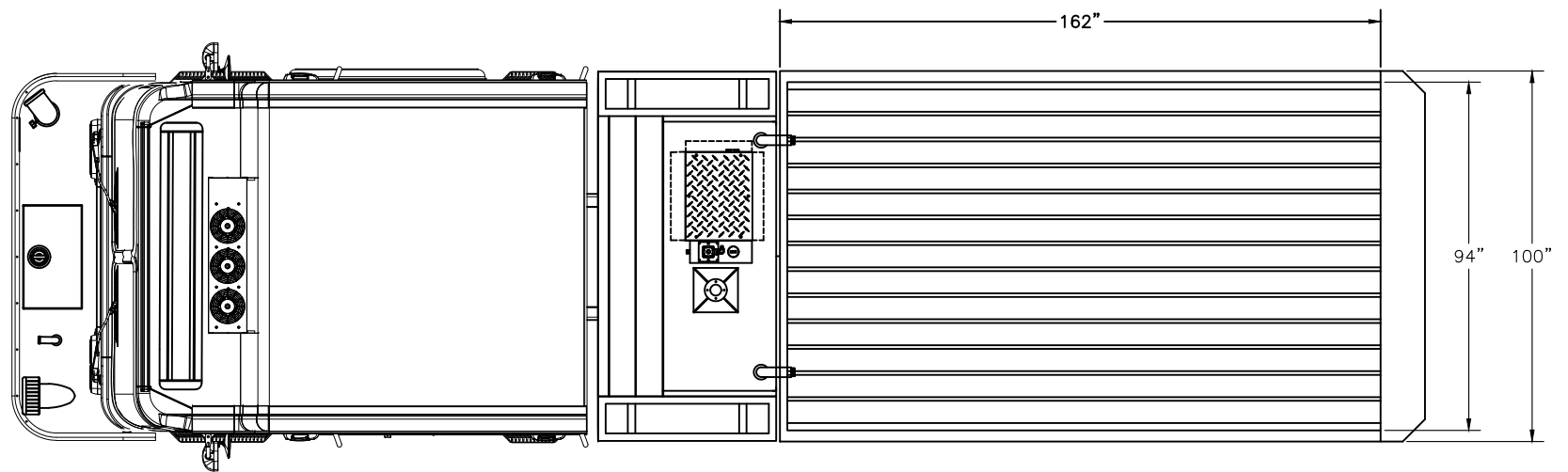
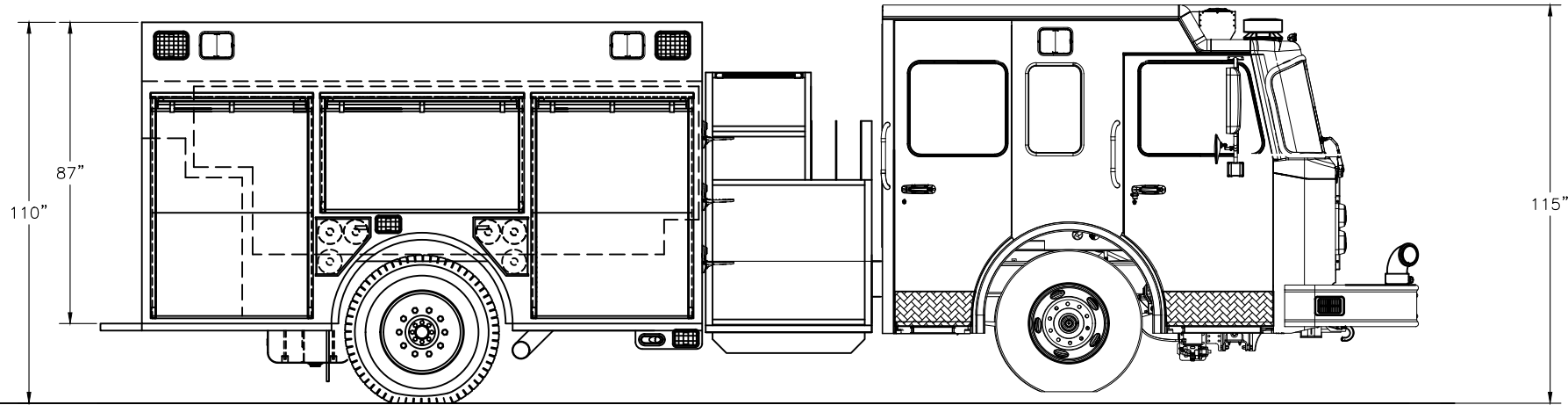
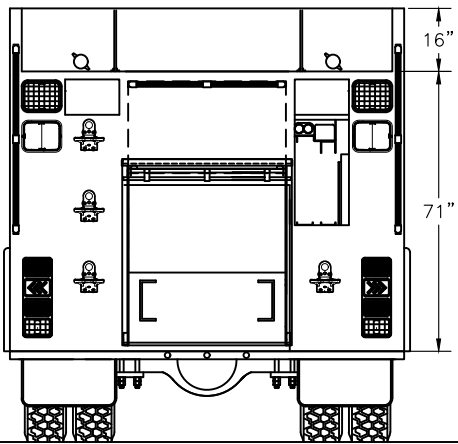
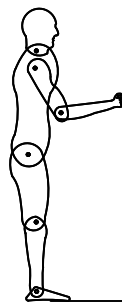


12'  
11'-6"  
11'  
10'-6"  
10'  
9'-6"  
9'  
8'-6"  
8'  
7'-6"  
7'  
6'-6"  
6'  
5'-6"  
5'  
4'-6"  
4'  
3'-6"  
3'  
2'-6"  
2'  
1'-6"  
1'  
6"  
0"



CAB: 94"W FC-94 MFD 10" RR  
ENGINE & TRANS: CUMMINS L9 450 HP/ALLISON 3000 EVS  
AXLES: 20,000# FRONT/27,000# REAR  
PUMP: HALE XMAX-150 1500 GPM SINGLE STAGE PUMP  
WATER TANK: 960 GALLONS POLY W/20/20 FOAM  
BODY TYPE: CHALLENGER WB 3/16" ALUMINUM  
FOAM SYSTEM: N/A

**THIS DRAWING IS A GENERAL CONFIGURATION AND MAY NOT NECESSARILY REFLECT ALL CONTRACTUAL REQUIREMENTS. CONTRACT SPECIFICATIONS SHALL PREVAIL OVER DRAWING.**

**CUSTOMER APPROVAL:**

NAME: \_\_\_\_\_  
TITLE: \_\_\_\_\_  
DATE: \_\_\_\_\_

| SYM | DATE | REVISION DESCRIPTION | APP'D |
|-----|------|----------------------|-------|
|     |      |                      |       |
|     |      |                      |       |
|     |      |                      |       |

SALES ENGINEER : TBD

|  |          |          |           |
|--|----------|----------|-----------|
| DIMENSIONS ARE APPROXIMATE & MAY VARY DUE TO BUILD ADJUSTMENTS |          |          |           |
| SCALE  | DWG SIZE | DRAWN BY | DATE      |
| NONE   | B        | MJH      | 6/02/2023 |
| APPROVED BY  |          |          |           |
| <b>COMMERCIAL PUMPER</b>                                       |          |          |           |
| <b>CAMPBELL SUPPLY RETAIL</b>                                  |          |          |           |
| <b>QUOTE # 9081-0</b>  |          |          |           |

